

LOGO2
producciones s.l.



SprintCam Vvs HD

Sistema ultra slow-motion
para retransmisiones en directo,
eventos deportivos,
publicidad, documentales
y películas.



SprintCam
EXTREME SLOW-MOTION by IMOVIX - www.imovix.com
Vvs HD

PHANTOM
Powered

↪ CÁMARA

- última generación de Vision Research, v-Series
- 2.700 fps en 1080i
- 5.800 fps en 720p
- 12.500 fps en SD 4:3
- fibra óptica SMPTE
- intercom
- 2 salidas de micro



↪ CCU

- señal Replay HD-SDI
- señal Live HD-SDI
- conexiones ethernet entre la CCU y remote Replay + OCP
- Genlock



↪ OCP: NUEVO DISEÑO

- control Joystick (iris, black, preview)
- RGB ganancia Master
- RGB pedestal Master
- knee slope / point control
- auto White/Black balance
- control de gamma
- chroma y saturación
- aumento del detalle
- frame rate / shutter control



↪ REMOTO SLOW MOTION

- selección de secuencias
- auto-clip compatible con EVS
- repetición inmediata
- controlador de velocidad del Replay
- almacenamiento en bloques
- compatible con EVS a través de hypermotion



Recording Time

	FULL HD 1080i		HD 720p		SD 640 x 480	
	16Gb	32Gb	16Gb	32Gb	16Gb	32Gb
300 fps	17 sec	33 sec	38 sec	81 sec	82 sec	163 sec
500 fps	10 sec	20 sec	23sec	46 sec	49 sec	98 sec
1,000 fps	5 sec	10 sec	11 sec	22 sec	24 sec	48 sec
Max fps	2,700fps 1.85 sec	2,700fps 3.70 sec	5,800fps 1.89 sec	5,800fps 3.79 sec	12,500fps 1.92 sec	12,500fps 3.84 sec

Camera (Phantom camera)

General	
Sensor	12-bit CMOS with 10µm pixel
Effective picture elements	1920 x 1080
Shutter	Global electronic shutter down to 1/1,000,000 sec
Lens mount	B4 Mount, PL Mount, C Mount, Nikon F Mount
Memory	16GB standard -5 sec @ 1,000 FPS in 1080i, 32 GB optional
Recording Frame Rate	Up to 5,800 FPS (in 720p) / Up to 12,500 FPS (in SD)
8-inch Color Viewfinder	Sony OLED, or any HD-SDI viewfinder
Operation temperature	0-40 degrees C (32-104 F)
Mounting	3/8 - 16 UNC
Dimensions (W x H x L)	180 x 325 x 410 mm
Weight	11.7 Kg (25.79 lb)

Input/Output Connectors	
Viewfinder connector	BNC type, 1.0Vp-p 75 Ω
DC (12V/1.5A)	4 and 5-pin Hirose
Lens connector	12-pin Hirose
Hybrid fiber connector	LEMO EDW.3K.93C.TLC / SMPTE 304 Tajimi / Fischer / Rosenberger connector (optional)

Transmission	
Transmission cable	SMPTE 311 Hybrid Cable up to 1,000m

Intercom - Audio	
Head set connector	5-pin XLR
Microphone input	2 x 3-pin XLR
Volume control	ENG, PROD, PGM

Camera Control Unit (CCU)

General	
Dimensions (W x H x D)	438 (19inch rack) x 88 (2U) x 465 mm
Weight	6 Kg (13.23 lb)
Operation temperature	0-40 degrees C (32-104 F)
Operation humidity	Max 80 % (non-condensing)

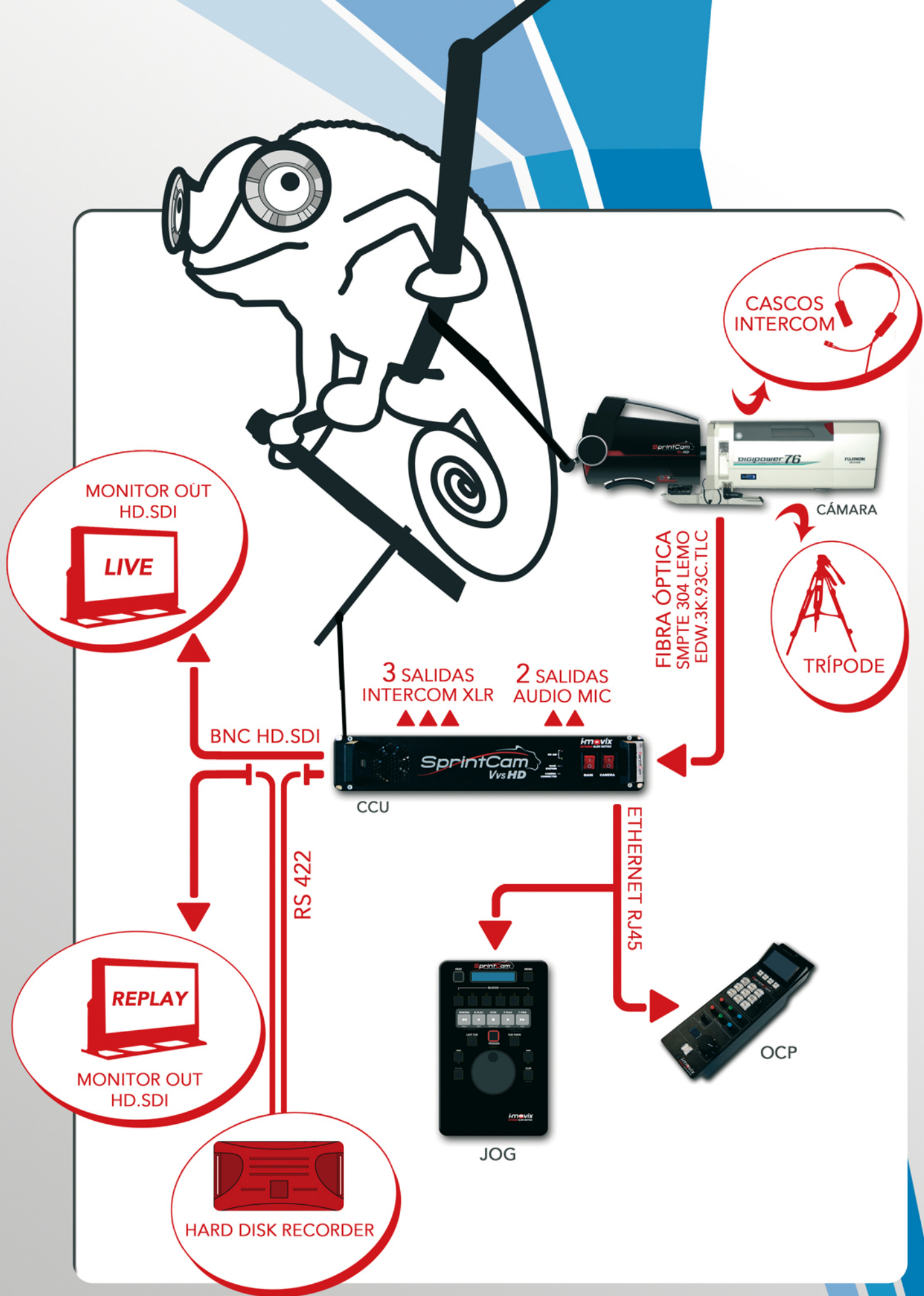
Connectors	
SDI-out	4 x BNC 1ch 1.0Vp-p 75 Ω
Control data	RJ45 x 3
Tally (R, G)	Input Relay Contact
Genlock	SD Analog Black Burst (Bi-Level) or HD Tri-Level Sync

Video Output Format	
Video Output Format	HD-SDI 1080i 50 / 59.98 / 60 HD-SDI 720p 50 / 59.98 / 60 SDI NTSC, PAL

Intercom - Audio	
Line Level	+4dBu Nominal
Intercom ENG/PROD	4-wire System (Balanced)
Intercom PGM	Balanced Input
Microphone output	2 x 3-pin XLR
Head set connector	5-pin XLR
Volume control	ENG, PROD, PGM

Fiber Connectors	
Fiber connector types	LEMO FMW.3k93C. SMPTE 304 Tajimi / Fischer / Rosenberger Connector (optional)

Power	
Power requirements	AC 80 V to 240V, 47 to 63 Hz
Power connector	IEC type, 3-pin male
Power consumption	280VA max. with camera





Logo 2

www.logo2producciones.com

STEADICAM
POLECAM
ENG
CABEZA ROBOTIZADA
PRODUCCIÓN AUDIOVISUAL